



Watchfield Court, Sutton Court Road, London, W4 4NA

£699,950

WHITMAN & CO.

SALES · LETTINGS · COMMERCIAL

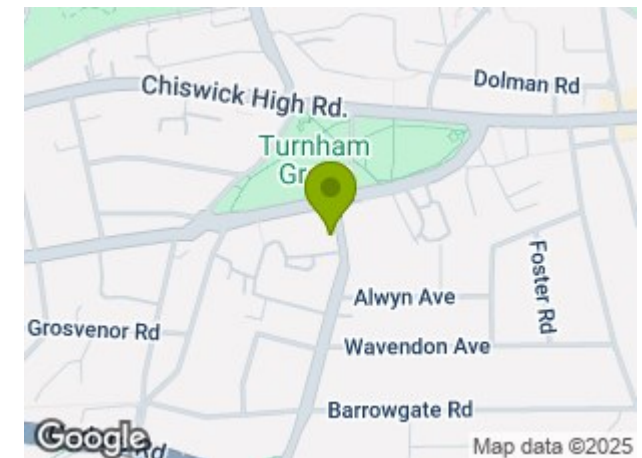
- Three double bedrooms
- Sought-after location
- Private balcony
- Views from all aspects
- Off-street parking
- No onward chain

Tenure - Leasehold with Share of Freehold
 Lease length - 167 Years remaining
 Ground rent - peppercorn
 Service charge- £7,950 pa
 Local authority - Hounslow
 Council tax - Band E

THE PROPERTY

An exceptionally light and spacious three-bedroom purpose-built flat, with views from all aspects and ideally located in this exclusive block offering close proximity to numerous amenities. The property features three double bedrooms, a 15' dual-aspect reception room, a fully integrated kitchen/breakfast room, a luxury bathroom with a separate cloakroom, and a private balcony. Additional benefits include off-street parking, communal gardens, a porter, and a share in the freehold. Ideally situated just south of Chiswick High Road, it provides easy access to tube and bus networks, as well as the extensive range of shops, bars, and restaurants in the area. No onward chain.

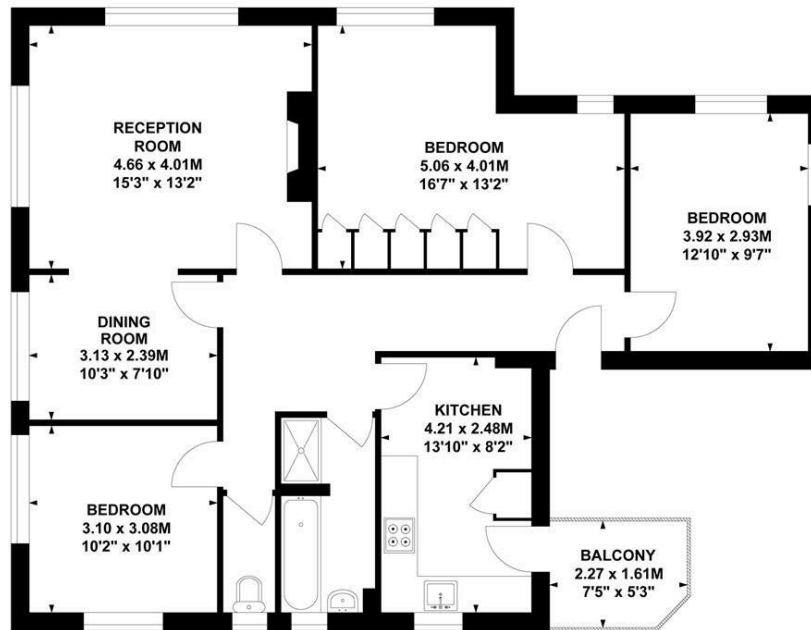
SITUATION



Watchfield Court, W4

Approximate Gross Internal Area
 97.30 sq m / 1047 sq ft

Key :
 CH - Ceiling Height



Second Floor

Not to scale, for guidance only and must not be relied upon as a statement of fact.
 All measurements and areas are approximate only

5-7 Turnham Green Terrace, Chiswick, London, W4 1RG

Tel 020 8747 8800

E-mail sales@whitmanandco.com

Website www.whitmanandco.com